

## Content:

Printing data requirements

Specifications

Folding box dimensions



## Requirements of printing data for the creation of packagings, labels, foils (FS and GI):

### How you can contact us:

Maxlrainer Str. 1  
D-83714 Miesbach  
Telefon: +49 (0) 8025-994-0

Im Hasenwinkel 5  
D-39179 Barleben  
Telefon: +49 (0) 39203-951-0

### ISDN (Leonardo MAC):

Miesbach: +49 (0) 8025-994-283  
Barleben: +49 (0) 39203-951-39

### Email:

[info@kroha.de](mailto:info@kroha.de)  
or directly to the pre-press  
[prepress.miesbach@kroha.de](mailto:prepress.miesbach@kroha.de)  
[prepress.barleben@kroha.de](mailto:prepress.barleben@kroha.de)

### This media can be read:

CD  
DVD  
3,5 " - floppy disks

### We work with the current versions of these programs (Mac):

QuarkXPress, PageMaker, InDesign,  
FreeHand, Adobe Illustrator, Corel Draw,  
Photoshop, ArtPro

### You can send us these formats:

- open files of the programs mentioned above
- EPS (**not** separated) with embedded fonts and pictures
- PDF (**not** separated) - if DCS-pictures are used, send them **separately** from the PDF-file!

### We guarantee a 100% appearance, if:

- all logos and pictures (TIF, EPS),
- all fonts are provided and embedded and
- a PDF-file is provided as a reference.

## Specifications:

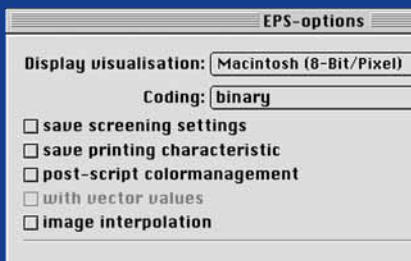
### FS outlines:

In case you do **not** have a **CAD**-program for the creation of a **folding box-outline** conforming to standard, we can provide you with these perforation outlines **free of charge**. This outline matches the later produced folding box in all details, which also correctly regards the **tuck in flap** and the **dust flap-length** beside the **A-B-H-dimensions**. (see description " **folding box dimensions** ")

### Fonts:

Fonts require character sets for **exposers/printers** and character sets for **screen display**. You are welcome to send us data ready for press in **open file** or **EPS** form, in which the fonts are converted into directories. Please also send a **PDF-file** or a **print out true to scale** for **control!**

### Images:



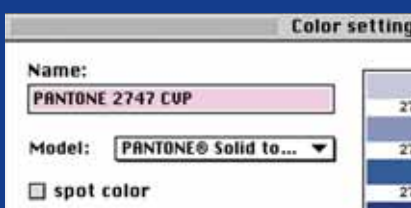
For a **proper** processing, we prefer images that were saved in the **TIFF-file** format. We can only work with EPS-pictures, if they were **not** saved using JPEG-compression, but in **binary format**.

Images are compiled with **100% zoom** and always in the **CMYK-mode** (print color circle) or **special color**, not in the **RGB-mode** (screen color circle).

Please save **DCS-EPS** files as a **single** file!

Images are compiled with **300 dpi** and **line scans** with **1200 lpi**.

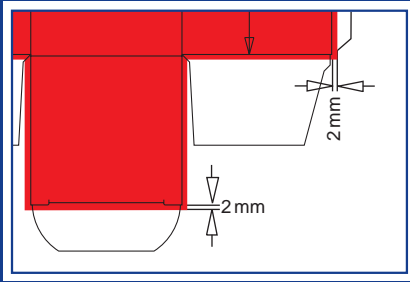
### Colors:



Provided data contains the **correct** color indications for special colors and full tone colors from the **Pantone-**, **HKS** or **scale color range** that are clearly **defined** as full tone or process colors (Euro-scale).

Suitable color ranges: **Pantone coated**, **HKS K**, **scale**.

## Trimming and trapping:



Sloping surfaces, images and lines have to protrude the folding box by **2 mm**. The trimming has to be **within 2 mm** also for the **dust flap** and the **tuck in flap** resp. the **gluing flap**. All other color surfaces and images are placed **in center** on the **creasing station**.

For **fonts**, **no** trappings or underfillings are to be assigned; considering the technical conditions they are being defined by us. For **images** residing **on** colored surfaces, **no** trapping or underfilling can be created. Additionally, a **minimum distance of 2 mm** to **all creases** and **cutting edges** is to be observed for all texts, surfaces and images resulting in **good readability**.

## Systems:

Folding boxes **generated by a PC (Microsoft)** require a **consultation**, and as the case may be a **test**, prior to our processing. In the **worst** case, a **re-setting** with the MAC-system may be necessary.

Texts for **package inserts** can be processed by us if the texts are supplied as **open** or **closed** files from the **listed** programs or as **plain** text files. However, **most texts** from the supplied files have to be **reformatted**, especially if they were created using a PC.

Files from other **setting systems** can be only be processed after **consultation** with the customer and a necessary **test**.

We are using **PDF X3** as printing files and for the digital object comparison. A punch outline has to be available in a color that does not appear in the printing product.

Additionally, the punch outline has to reside in the foreground on top of the elements of the folding box.

Surfaces free of lacquer can be marked with a color that does not appear in the product. The surface free of lacquer has to reside in the background and may not overlap other elements.

**In case of doubt ask us before you start off!**

## Folding box dimensions:

**A** = the measure at the footprint, parallel to the linkage (axis of rotation) of the tuck in sealings.

**B** = the second measure at the footprint.

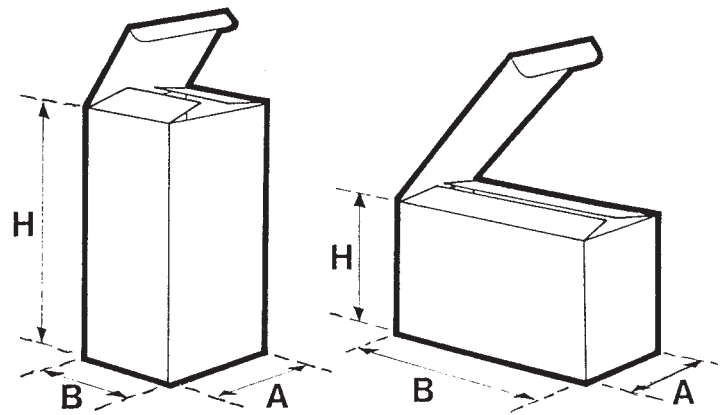
**H** = the height, the vertical measure between both sealings.

**C** = gluing flap

**E** = top flap resp. bottom flap

**F** = tuck in flap

**G** = dust flap



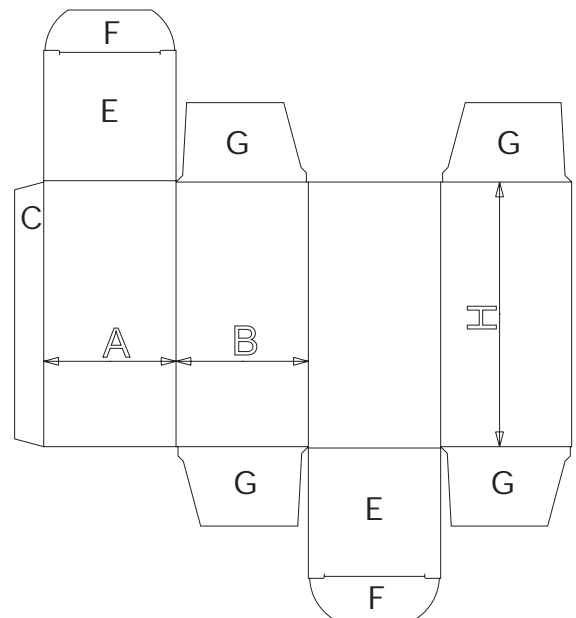
## Please mark with a cross!



**Norm A 2120**

**Norm 50 A**

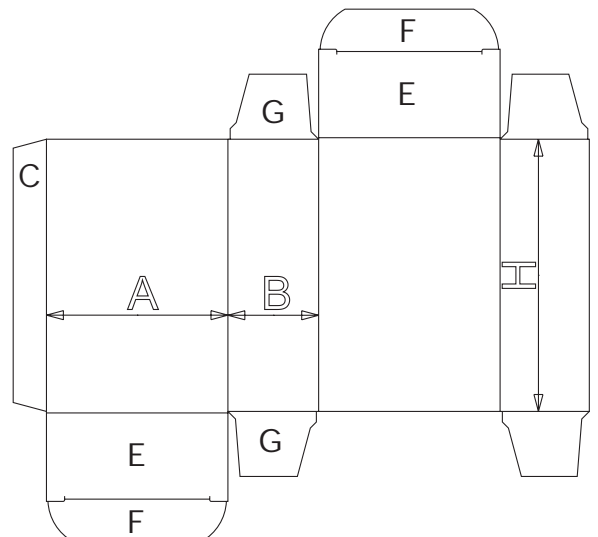
Folding box with shifted tuck in flaps and safety slashes.



**Norm A 2220**

**Norm 90 A**

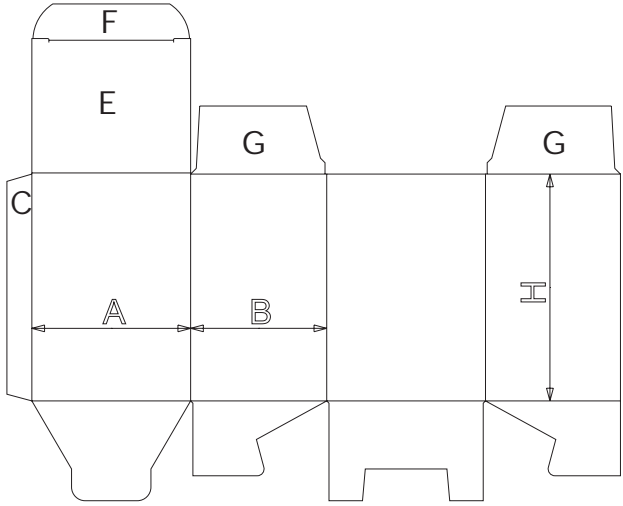
Folding box with shifted tuck in flaps and safety slashes.





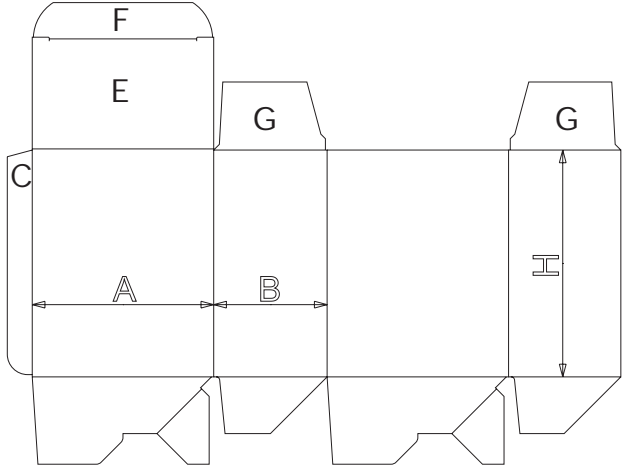
**Norm A 5520**  
**Norm 180 A**

Folding box with tuck in bottom.



**Norm A 6020**  
**Norm 170 A**

Folding bottom or automatic bottom.



**Norm A 2420**  
**Norm 190 A**

Folding box with opposing tuck in flaps and safety slashes.

